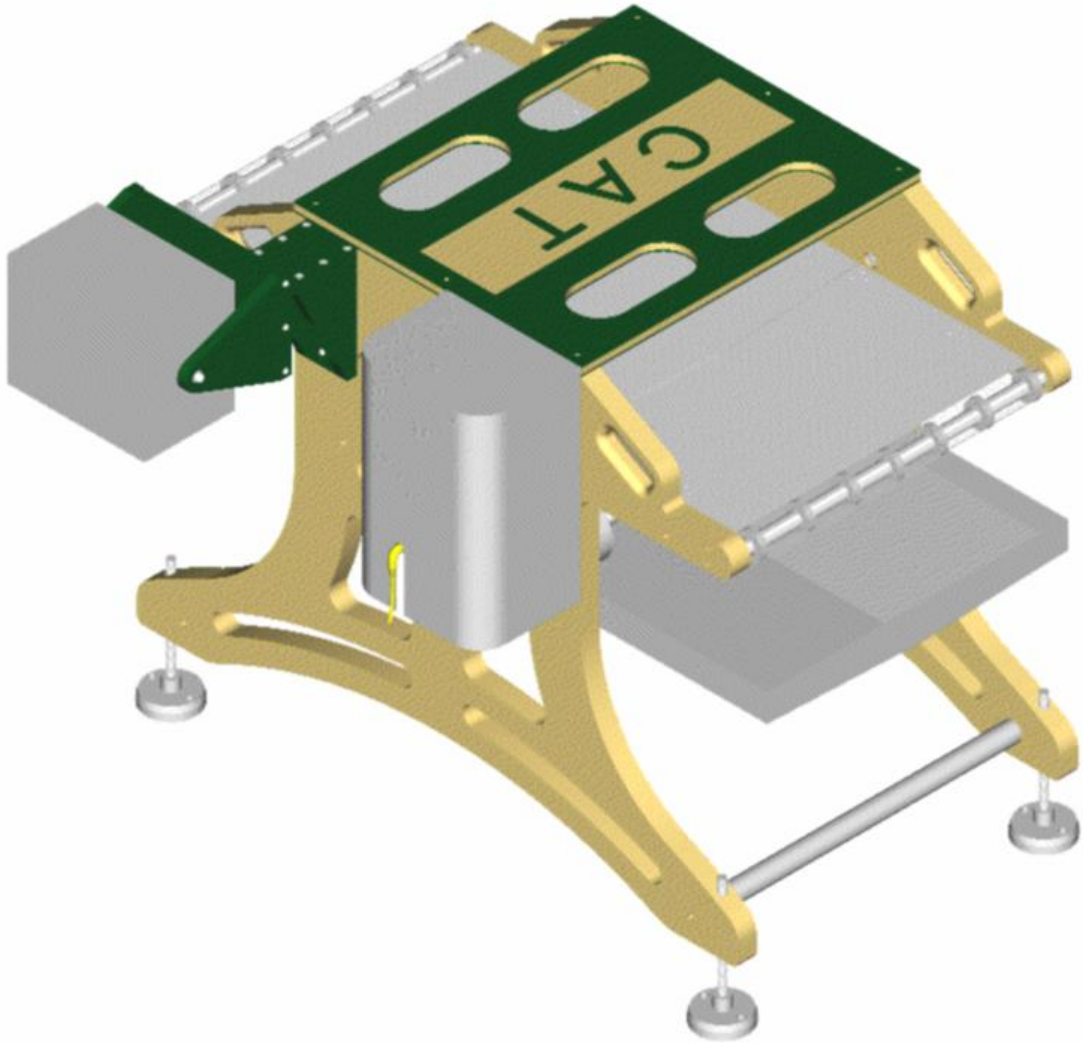


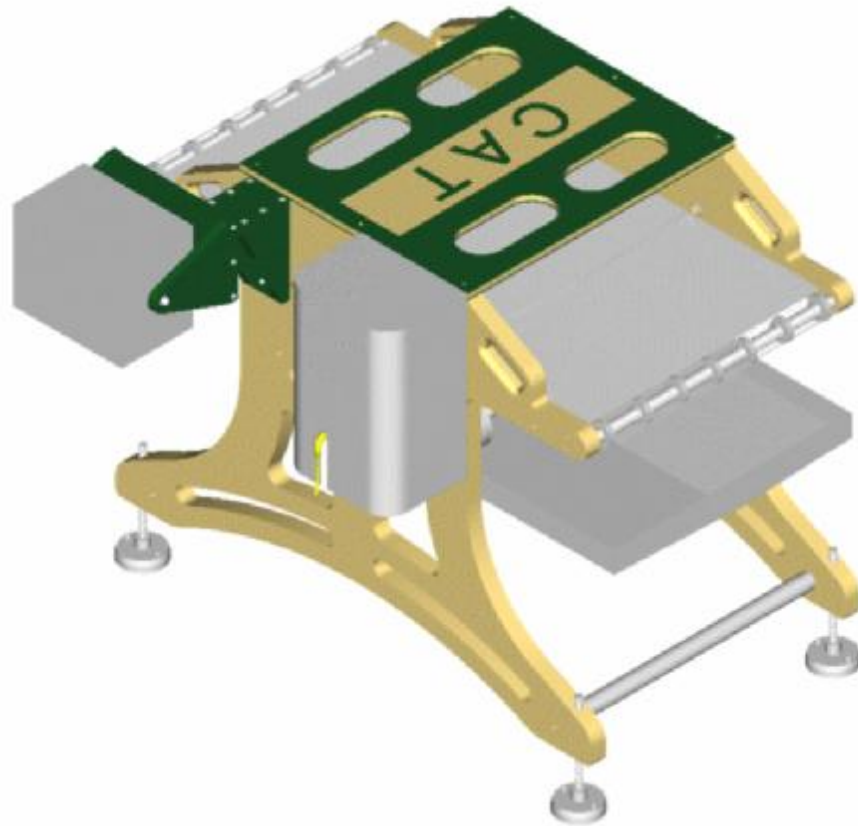


C A T



**DuraFlow Accumulation Flow Scale**

---



## **The DuraFlow**

The DuraFlow is a conveyorized scale designed to accumulate a flow of product for use as a production management tool.

The DuraFlow can be interfaced to other machinery to maximize yield potential.

The DuraFlow is capable of providing dependable accuracy that no other brand can touch. Five years of research, design, and in-plant testing have made the DuraFlow the most trouble free design on the market.

## **Made In USA**

Unlike other imported machines, the DuraFlow is manufactured solely in the United States from parts that are readily available from suppliers in the United States. The DuraFlow design which utilizes fewer proprietary electronic parts making the machines easier to maintain from parts that can be obtained through local vendors.

**Our goal is to make reliable machines, not huge profits from parts and service!**

---

## Features

Accumulated total weight in real-time.

Pounds per minute in real-time.

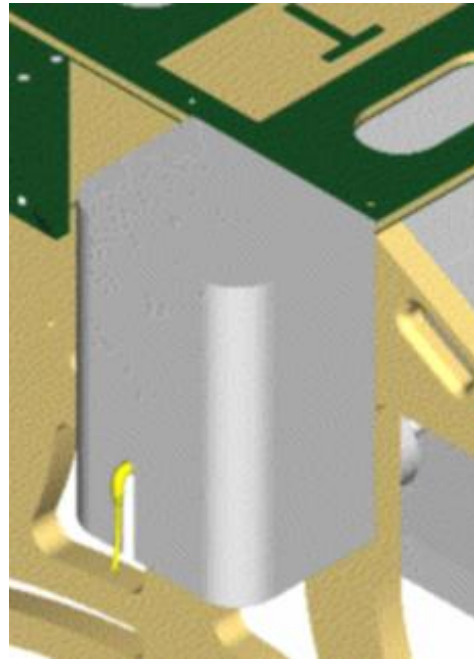
Adjustable rate window for pounds per minute calculations.

Photo cells to eliminate accumulations when product is not running.

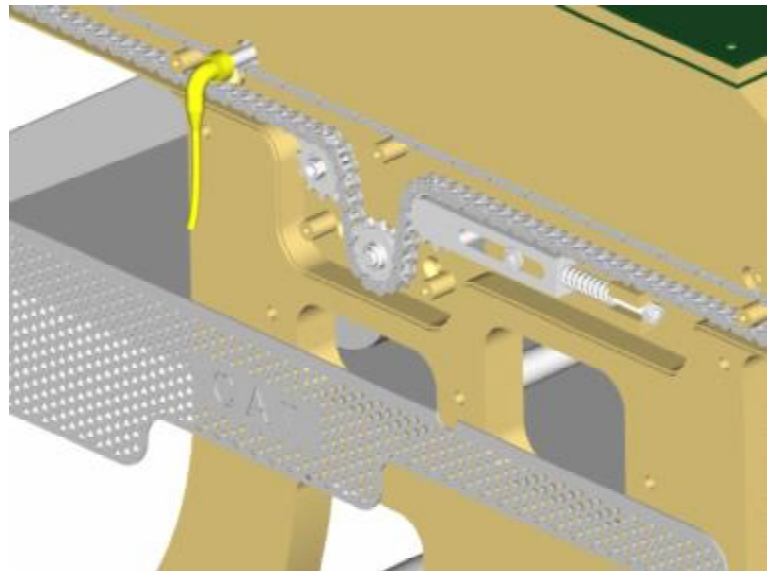
Belt speed sensor to allow belt speed adjustments without interfering with calibration settings.

Computer interfacing through various network protocols including TCP/IP, and Modbus.

Multiple conveyor widths.



Unique motor/gearbox cover design allows easy removal while providing maximum protection from harsh environments.



Unique dual chain drive mechanism maintains constant belt tension between the drive and idler sprockets to provide maximum accuracies.

---

## **Options**

Belt Widths: 14 , 24 , 30 inches

Belt Heights: 28 - 33 , 33 - 38 , 40 - 45 inches

Communications: MODBUS TCP (Model 1310 Indicator)

Speed Controller Communications: MODBUS TCP

## **Specifications**

VFD Voltage: 208-220 Volt 3- Phase, 460-480 Volt 3-Phase

VFD Amperage: 1.24 FLA, 0.62 FLA

Indicator Voltage: 100 - 240 VAC

Indicator Amperage: 3.14 Amps

Weighing Capacity: Configuration Dependant

Weighing Accuracy: > 99.00% For Complete Production Run